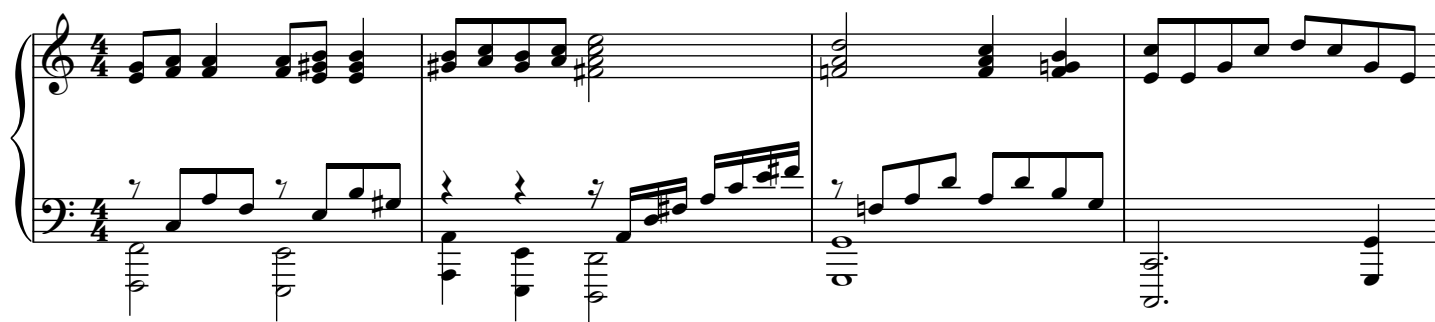


Piano

Слышал кто о воскресении?

сл. и муз. Воробьев С.



21

This system contains measures 21 through 24. The treble clef staff features a series of chords and eighth-note patterns. The bass clef staff has a melodic line with eighth notes and rests, starting with a fermata in measure 21. Measure 24 ends with a double bar line.

25

This system contains measures 25 through 28. Measures 25 and 26 are marked with a first ending bracket (1.). Measures 27 and 28 are marked with a second ending bracket (2.). The treble clef staff has a continuous eighth-note melody. The bass clef staff provides harmonic support with chords and single notes.

29

This system contains measures 29 through 33. The treble clef staff continues the eighth-note melody. The bass clef staff features a steady accompaniment of chords and single notes.

34

This system contains measures 34 through 37. The treble clef staff has a more complex melodic line with some accidentals. The bass clef staff continues with the accompaniment, including some chords with fermatas.

38

This system contains measures 38 through 41. The treble clef staff features a rapid sixteenth-note passage in measure 39. The bass clef staff has a melodic line with eighth notes and rests. The system concludes with a double bar line in measure 41.